



Surface Mount

**SAFETY NOTE:** All stainless steel slide bedway riding surfaces will get hot from direct sunlight exposure!

It is highly recommended that the slide is installed on the job site with direct northern exposure placement and/or in a fully shaded area to minimize heat build up and transfer to users.

# Stainless Steel Playground Slide Model SS-P305

## Specifications

**Description:** Triple Stainless Steel Playground Slide  
**Entry Height:** 5' 0"  
**Inside Width:** 28" each flume  
**Slide Run:** 9' 9"  
**Stairs & Platform:** *By others*  
**Space Requirements:** 7' 5" x 11' 5"

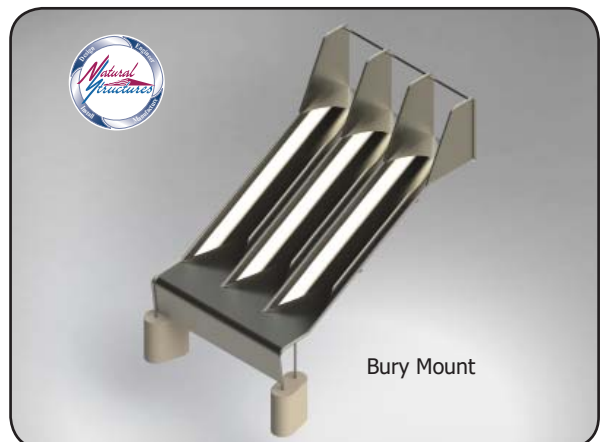
Series Models Available\*

Model	Slide Entrance Height	# of flumes
SS-P105	5' 0"	(1) Single
SS-P205	5' 0"	(2) Double
SS-P305	5' 0"	(3) Triple

\***BM** in model number indicates **Buried mount**  
 \***SM** in model number indicates **Surface mount**

## Features

- Entrance: Grab bar above entrance
- Exit Height: 1' 0"
- Stainless: 12 Gauge stainless
- Hardware: 304 Stainless
- Interior & Exterior Finish: 2B Mill with blended welds
- Buried or surface mount
- Made in the USA



Bury Mount

\*Playground surfacing (by others) required.



PO Box 270, Baker City, OR 97814 (541) 523-0224 (800) 252-8475 [www.naturalstructures.com](http://www.naturalstructures.com) - [info@naturalstructures.com](mailto:info@naturalstructures.com)